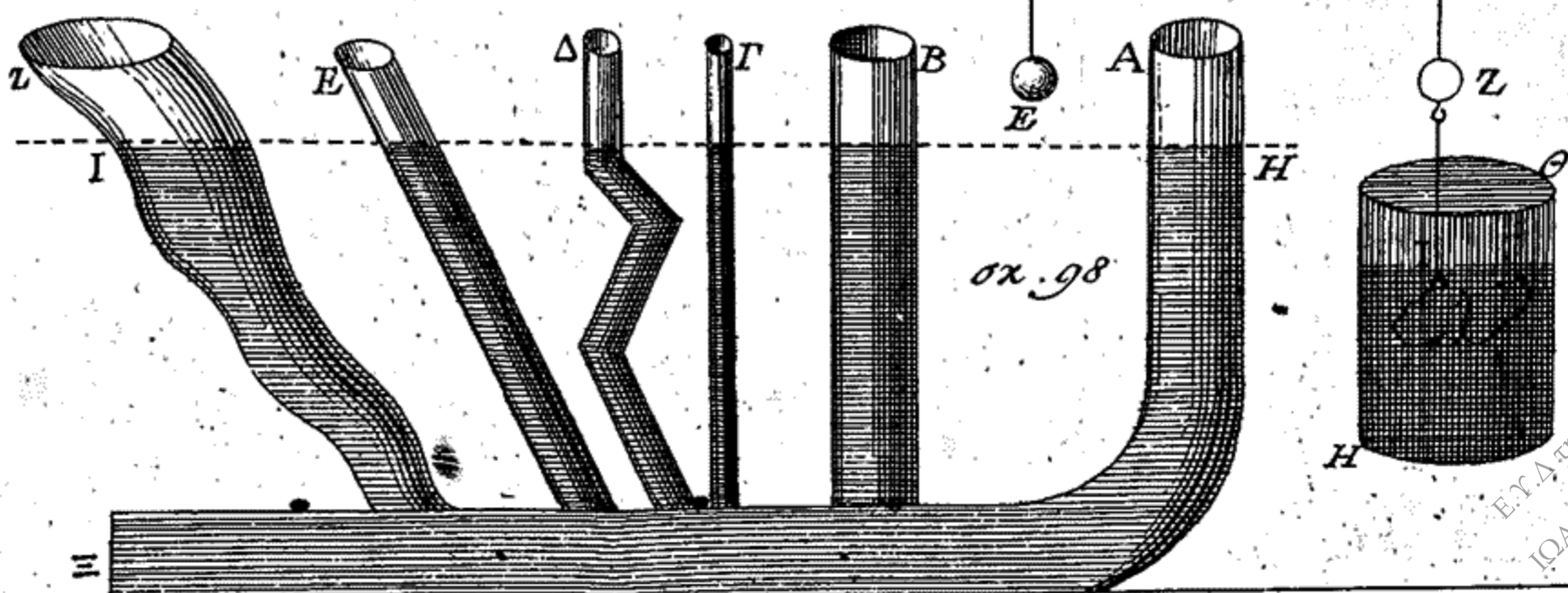
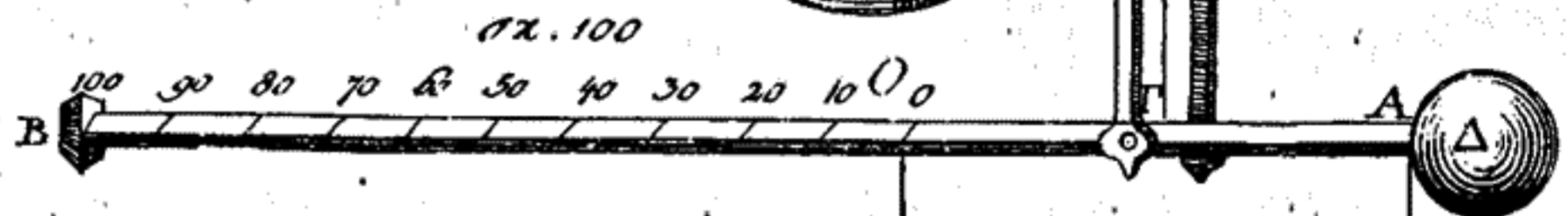
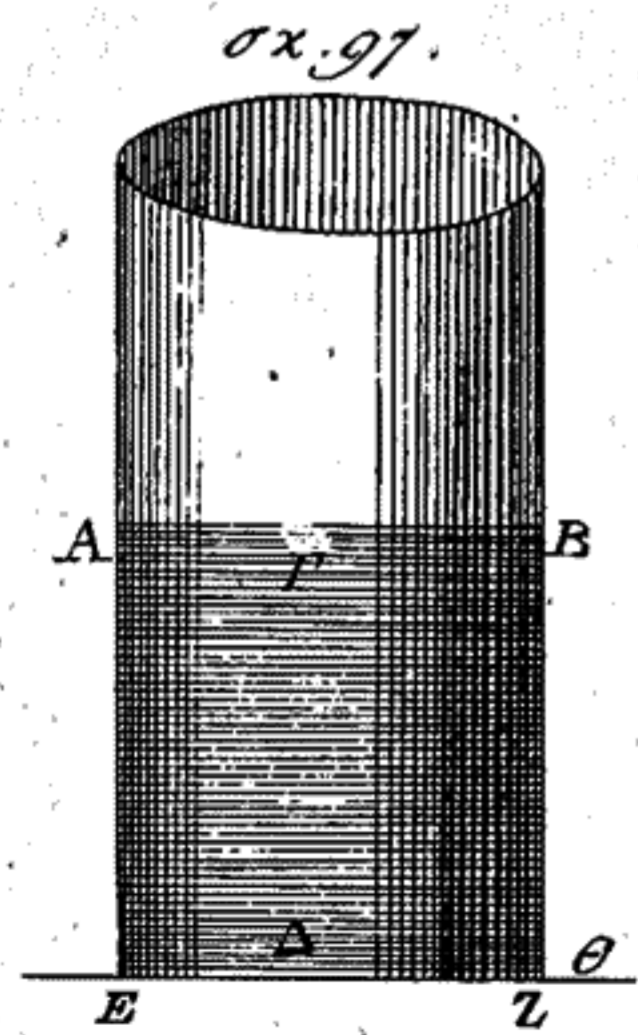
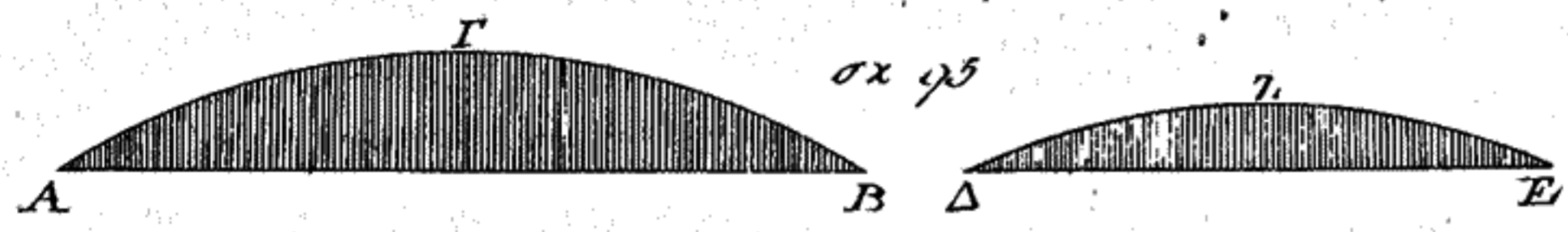
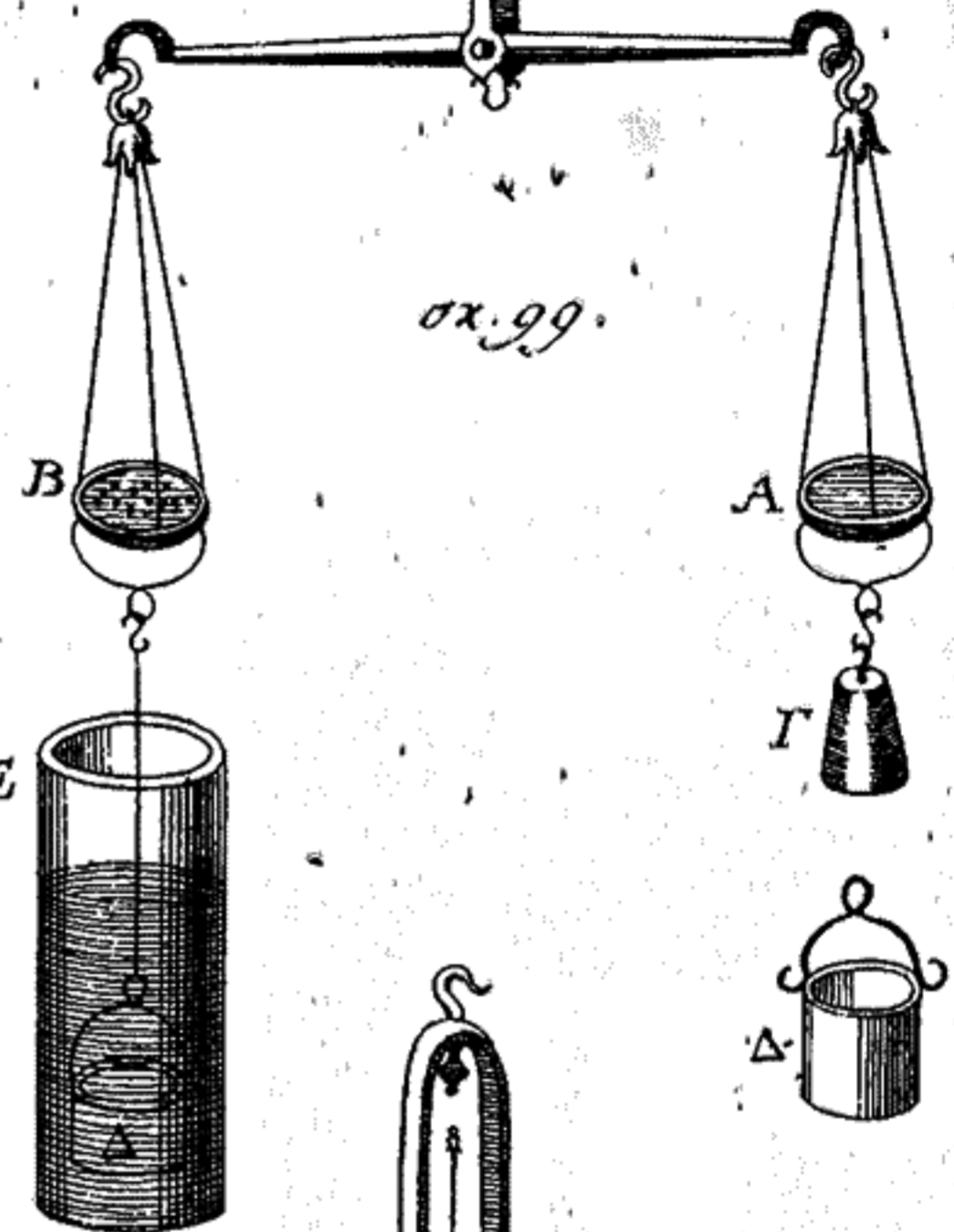
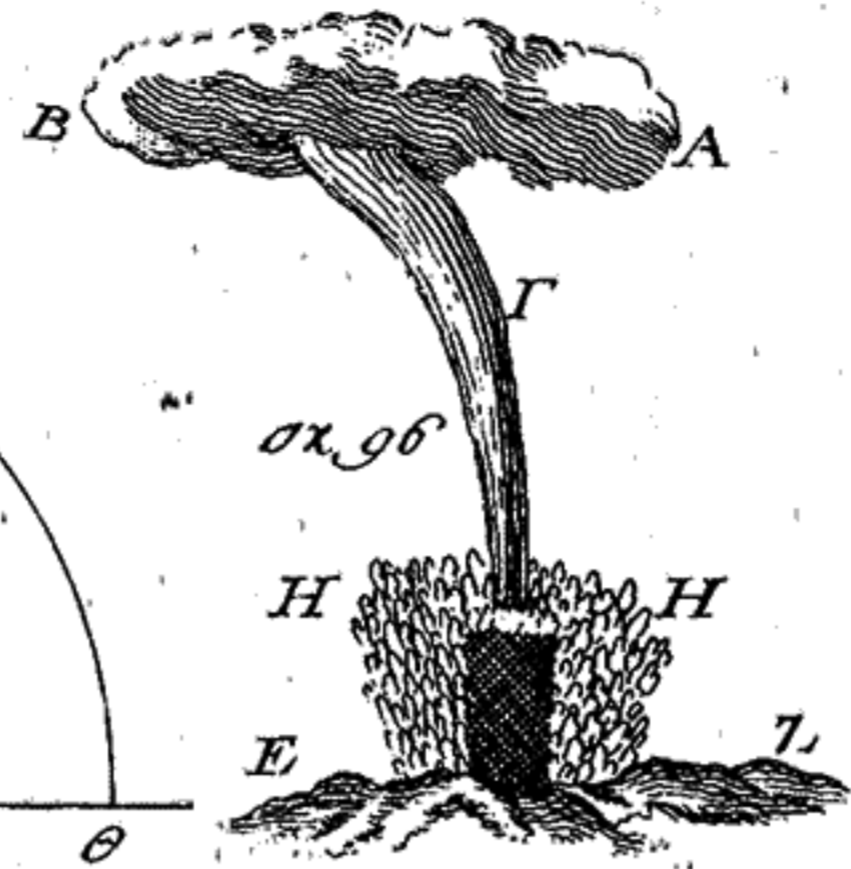
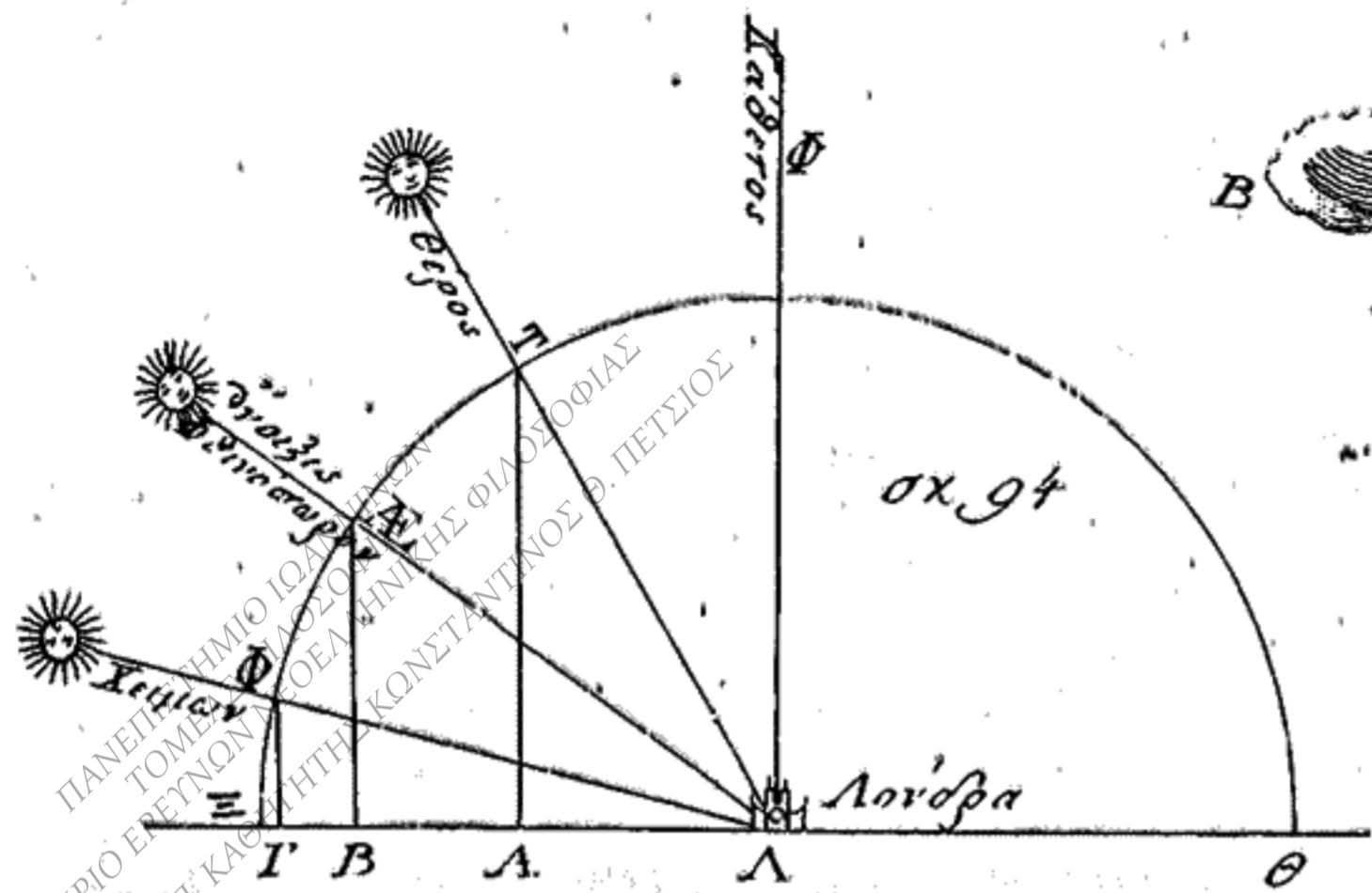
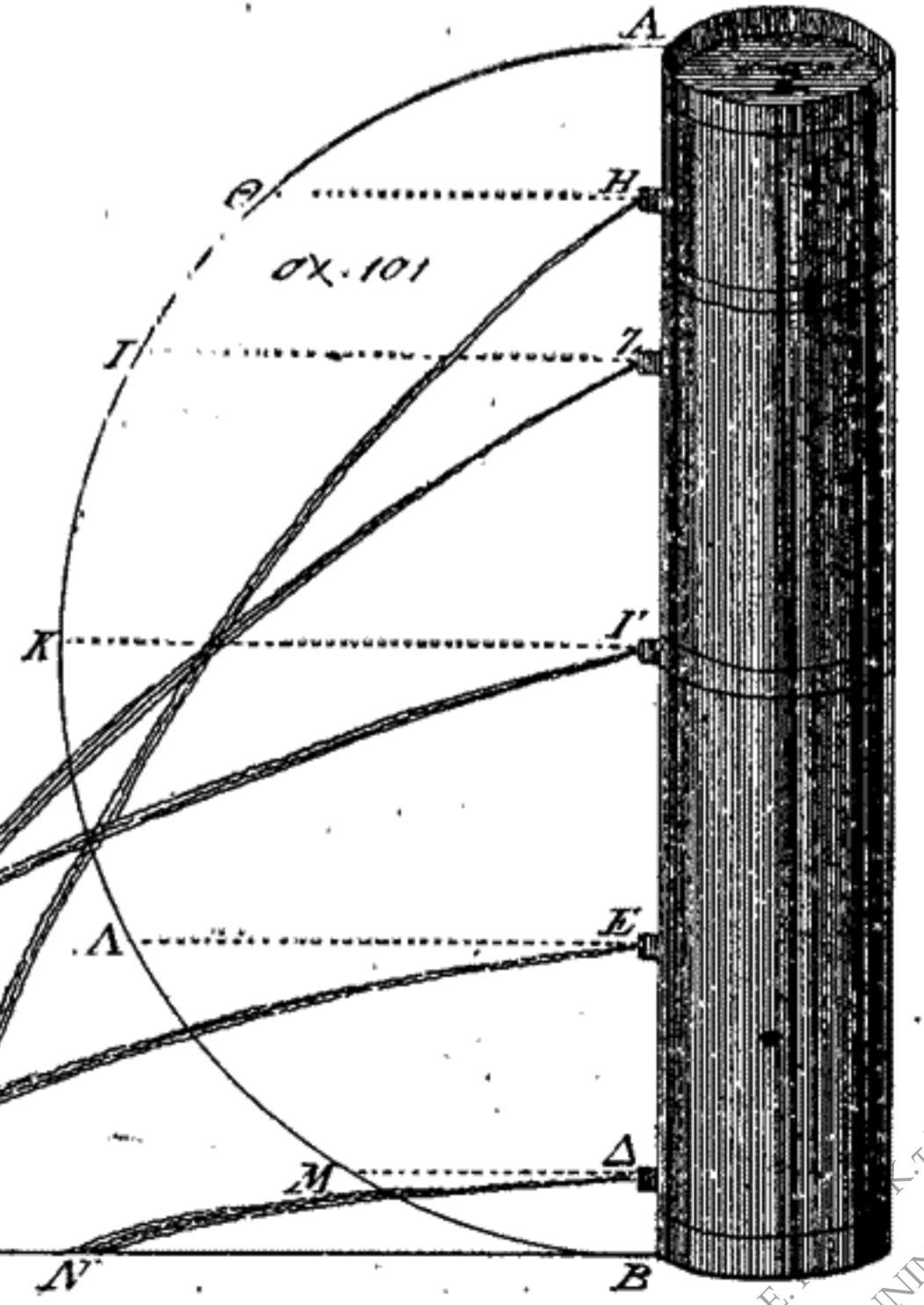
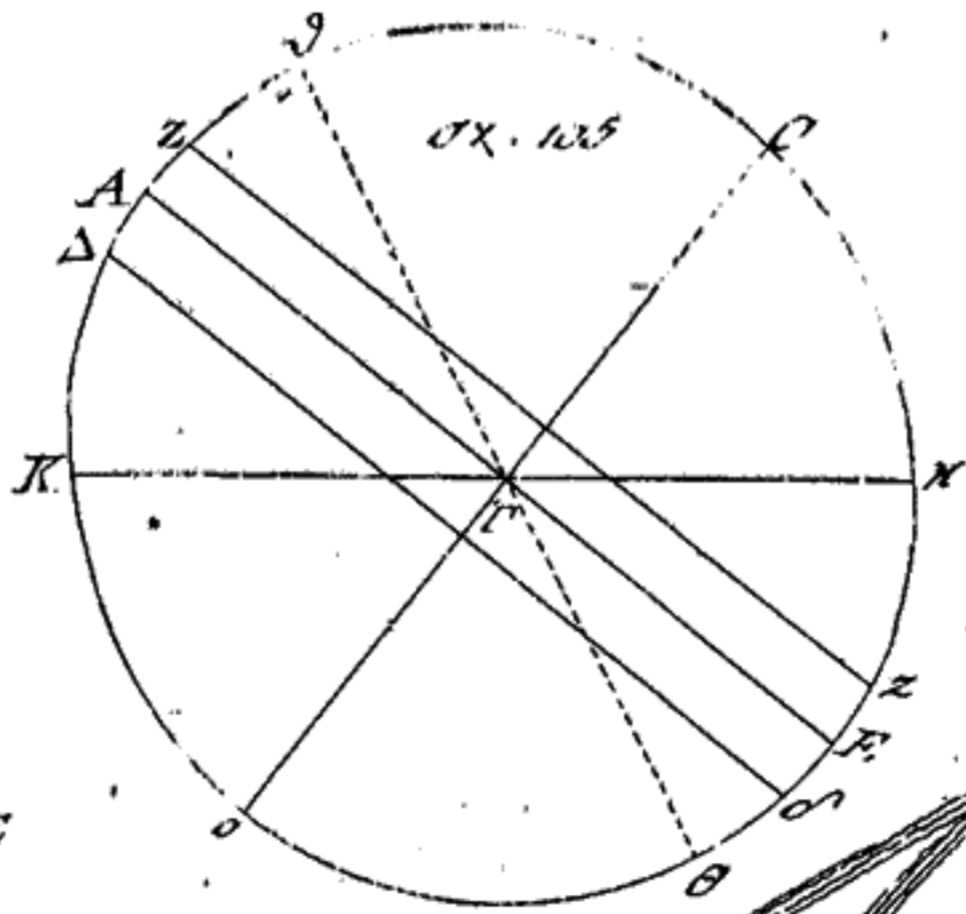
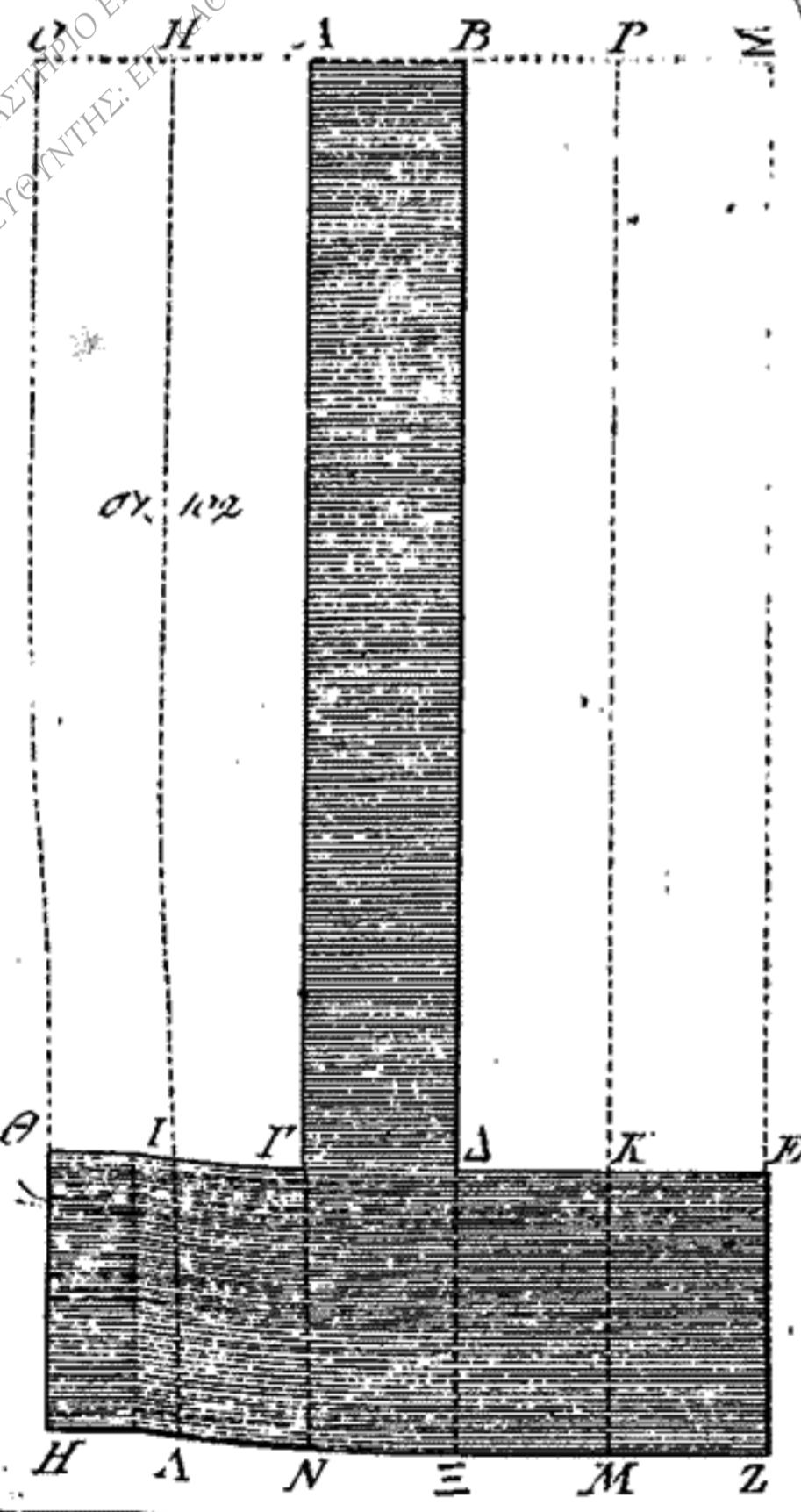
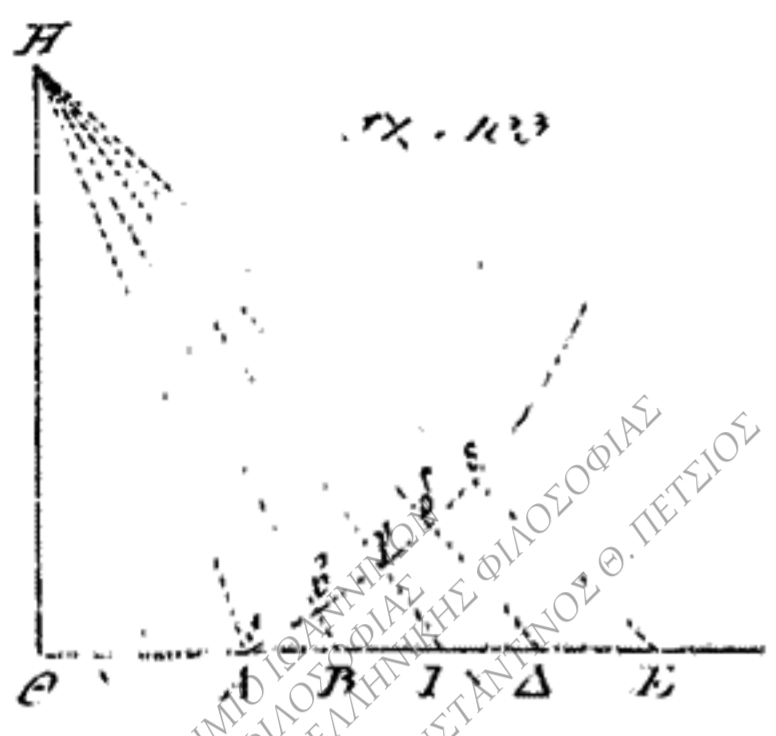
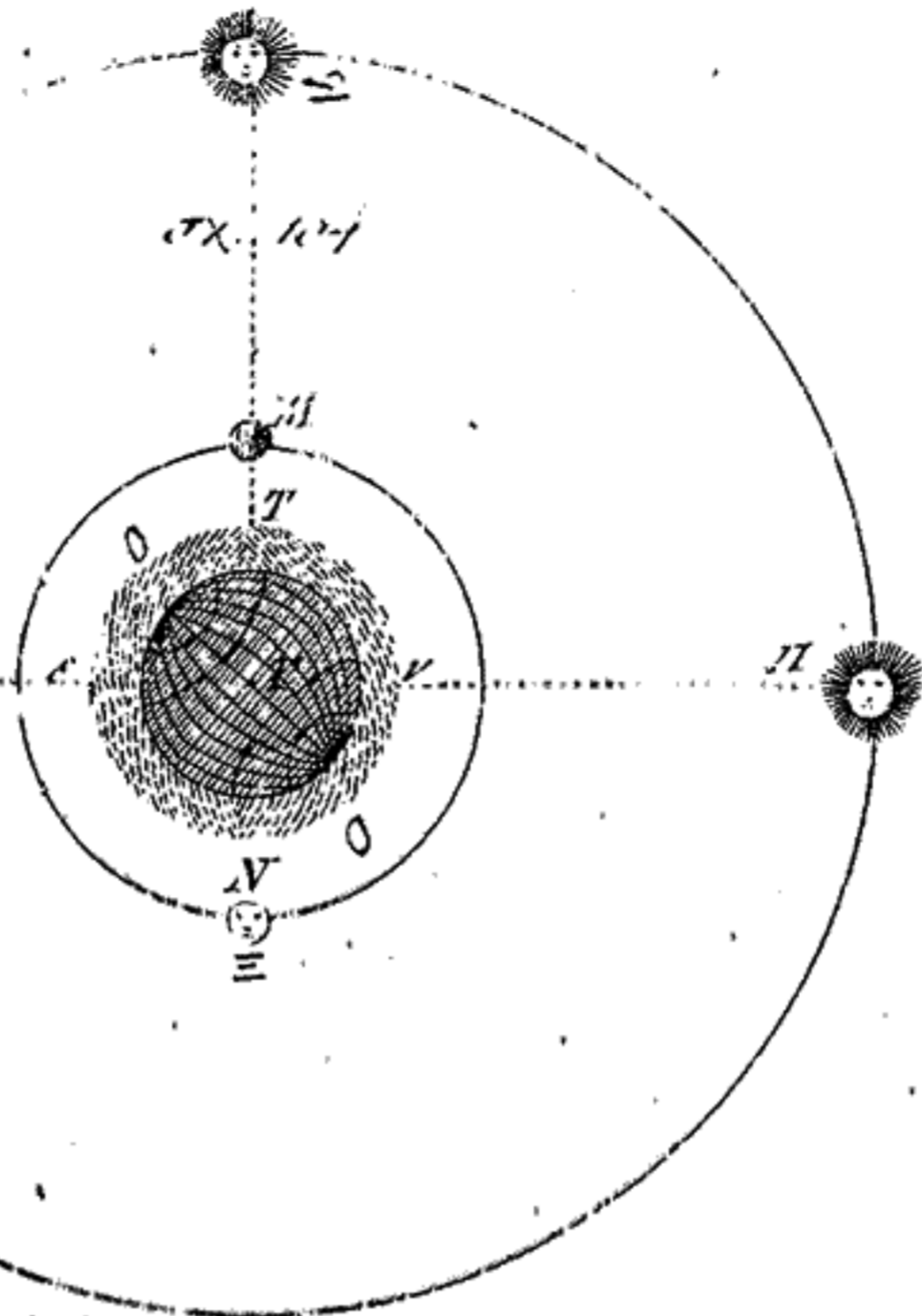
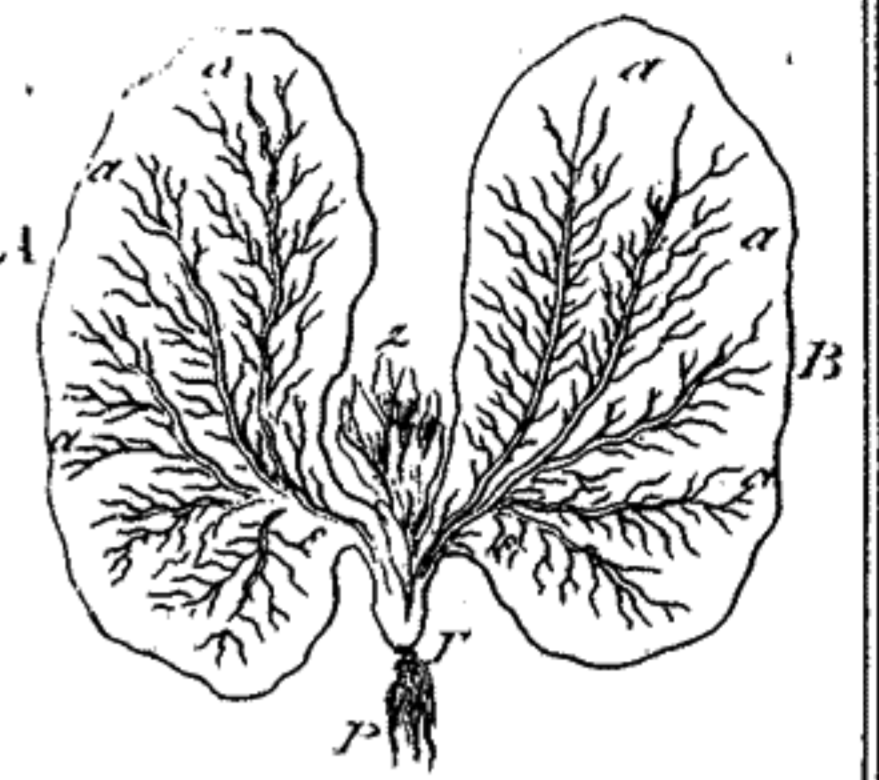


ΕΡΜΑΚΗΣ ΚΑΡΥΤΗΣ
 ΓΡΑΦΗΝΑ 1906



Ε. Δ. της Κ. τ. Π.
ΙΩΑΝΝΙΝΑ 2006

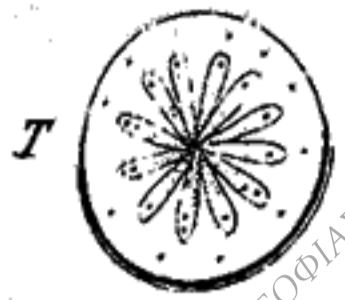
σχ. 106



ΠΑΝΕΠΙΣΤΗΜΙΟ ΙΩΑΝΝΙΝΩΝ
 ΤΟΜΕΑΣ ΦΙΛΟΣΟΦΙΑΣ
 ΕΡΓΑΣΤΗΡΙΟ ΕΡΕΥΝΩΝ ΝΕΟΕΛΛΗΝΙΚΗΣ ΦΙΛΟΣΟΦΙΑΣ
 ΔΙΕΥΘΥΝΤΗΣ: ΕΥΑΓΓΕΛΙΝΗΣ ΚΩΝΣΤΑΝΤΙΝΟΥΣ Θ. ΠΕΤΣΙΟΣ

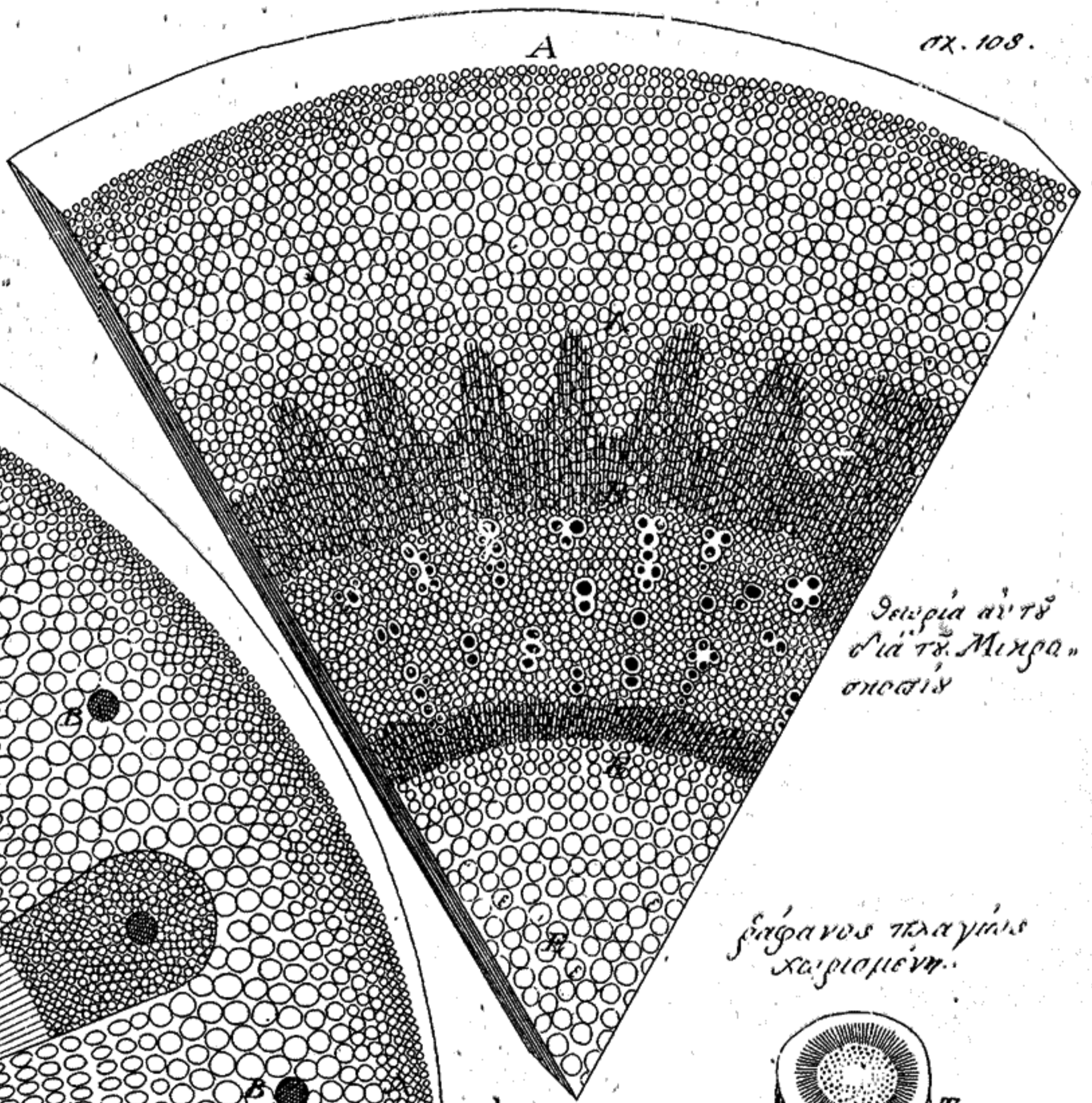
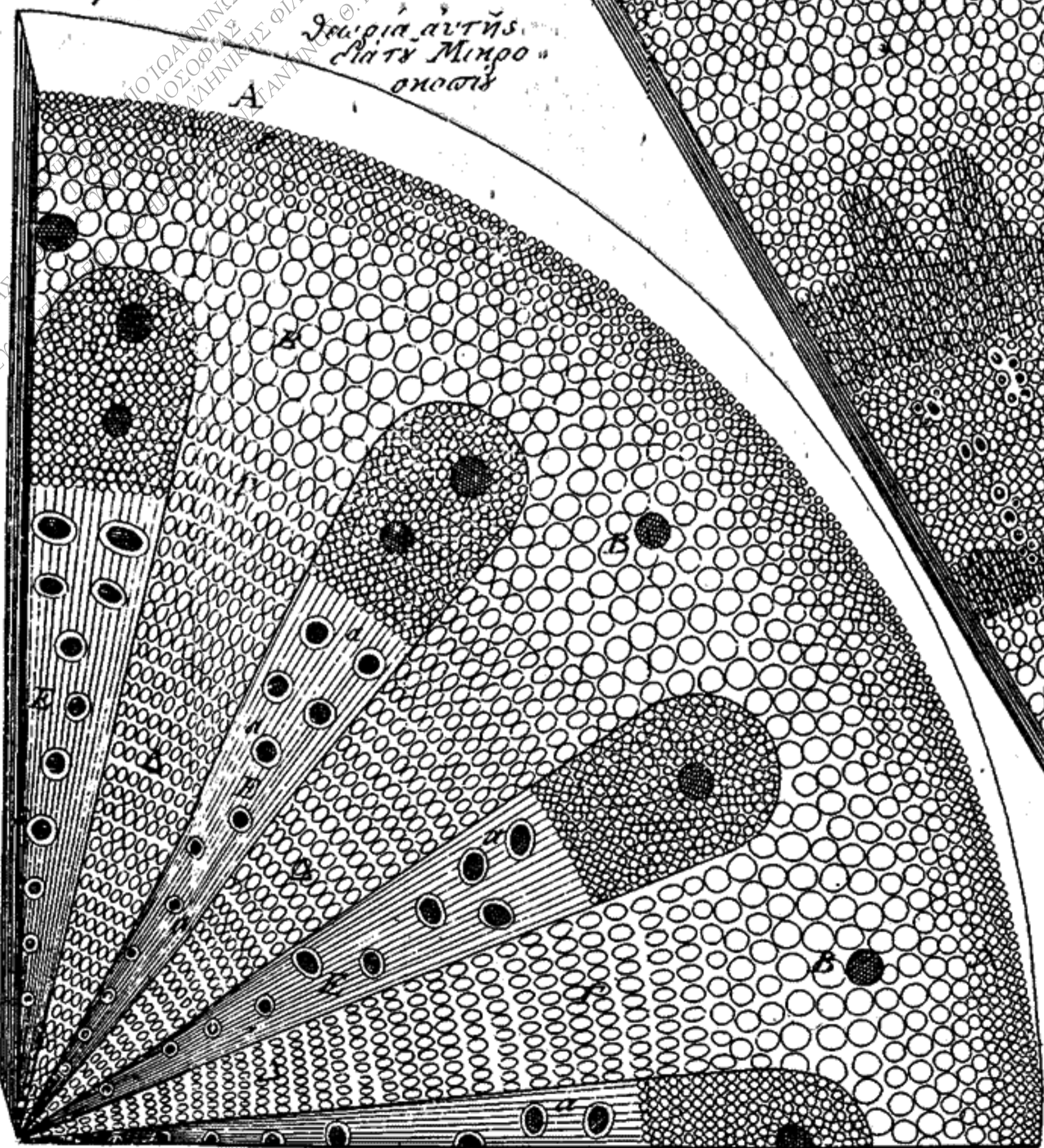
ρίζα ἀγίνης πλαγίως
κατεσπινθη

σχ. 108.



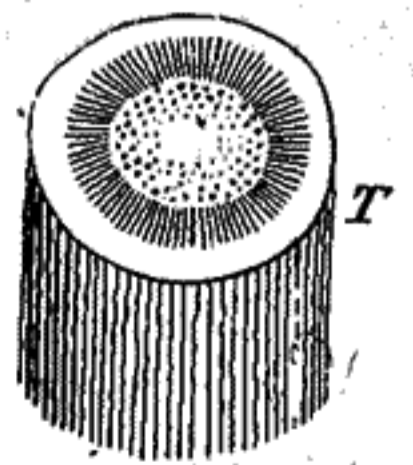
σχ. 107.

ἰσχυρία αὐτῆς
ἐπὶ τῆς Μικρο-
σκοπίᾳ



ἰσχυρία αὐτῆς
ἐπὶ τῆς Μικρο-
σκοπίᾳ

ρίζανος πλαγίως
κατεσπινθη.

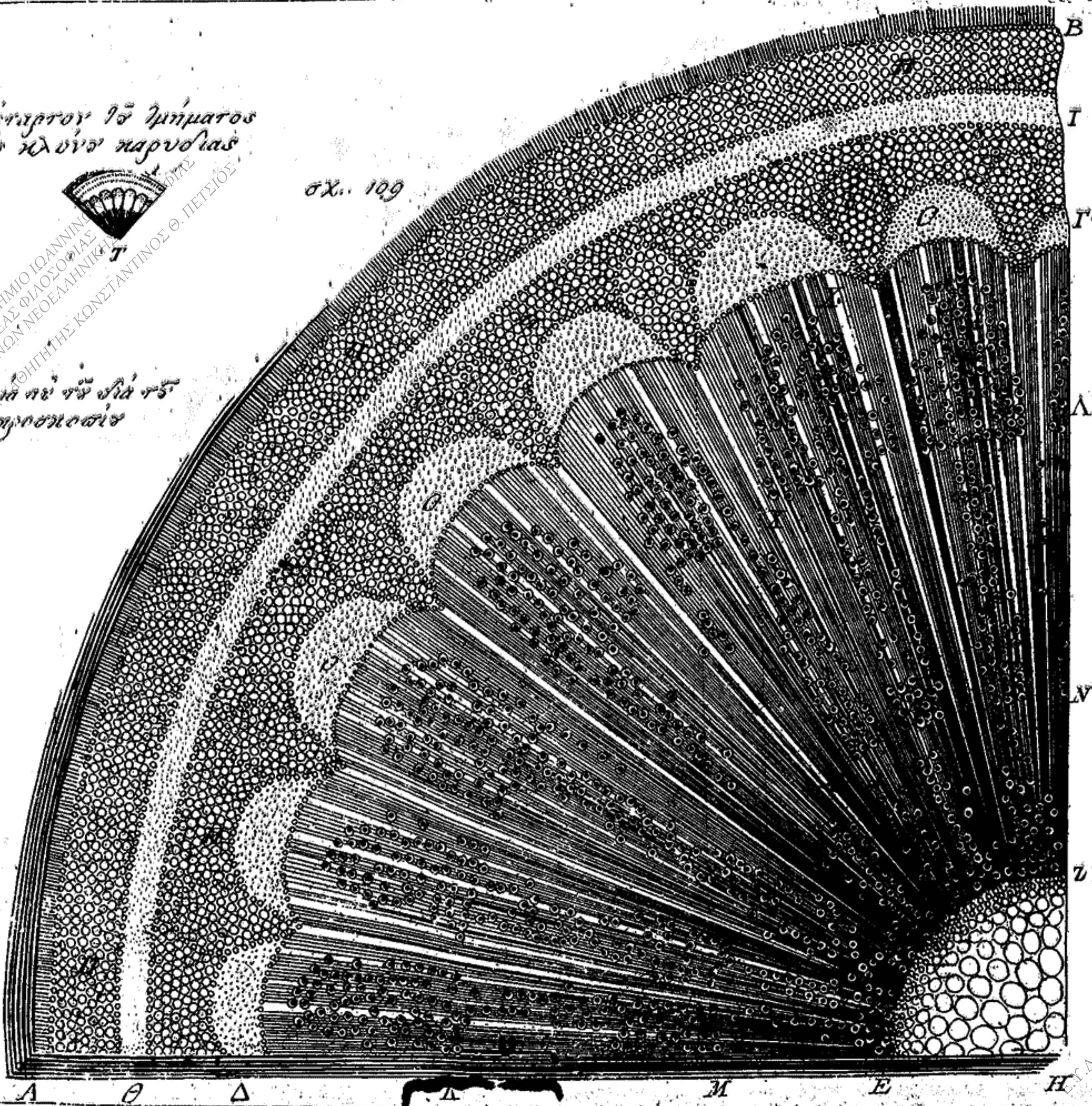


το τέταρτον 1^{ον} ημίματος
εἰς κλῦνα παρυφίας



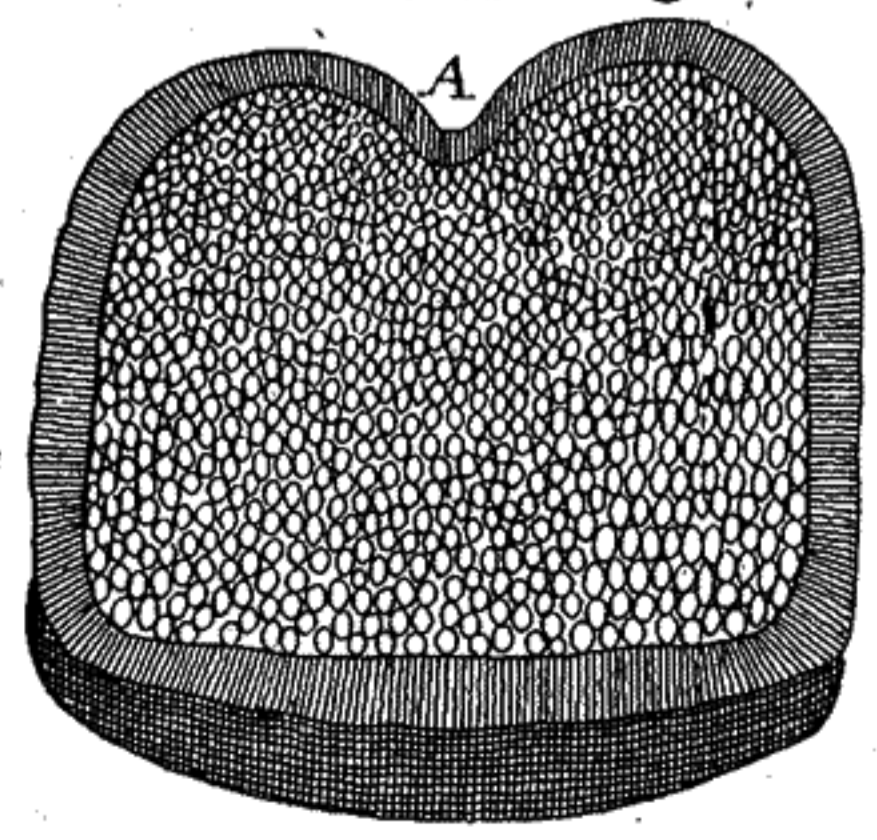
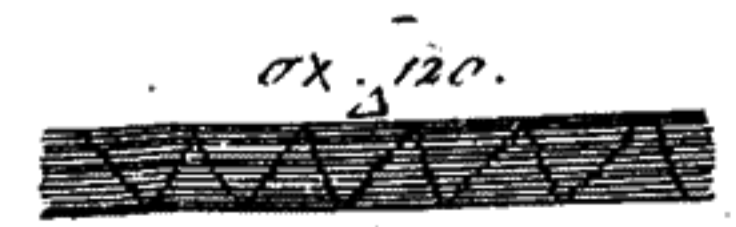
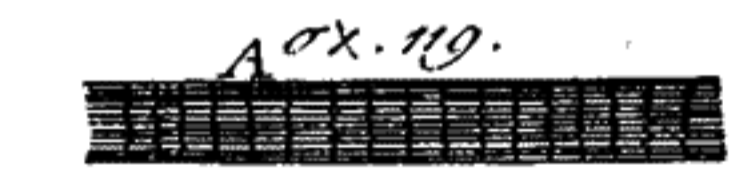
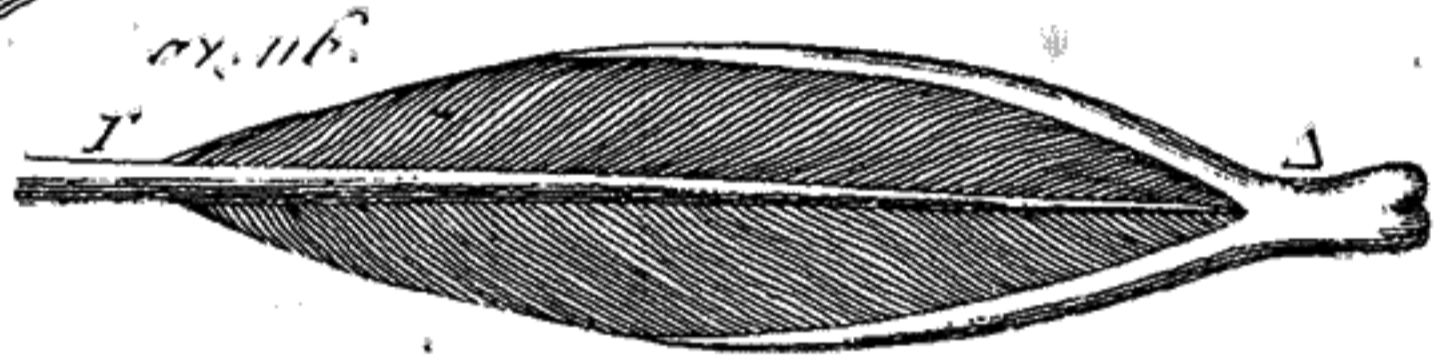
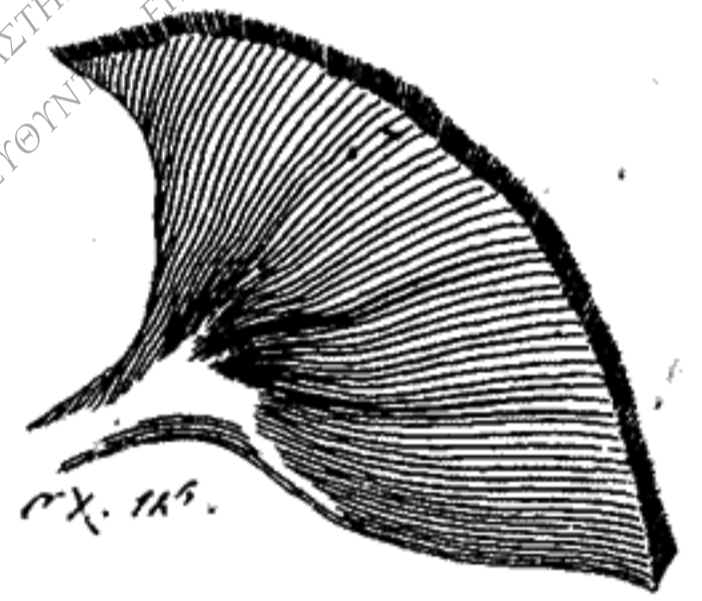
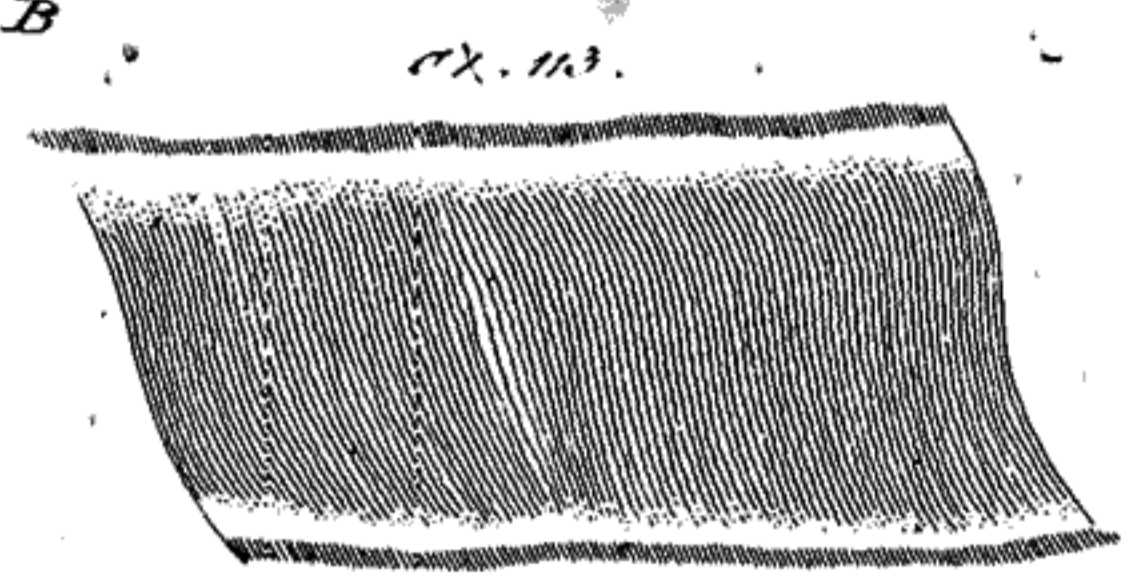
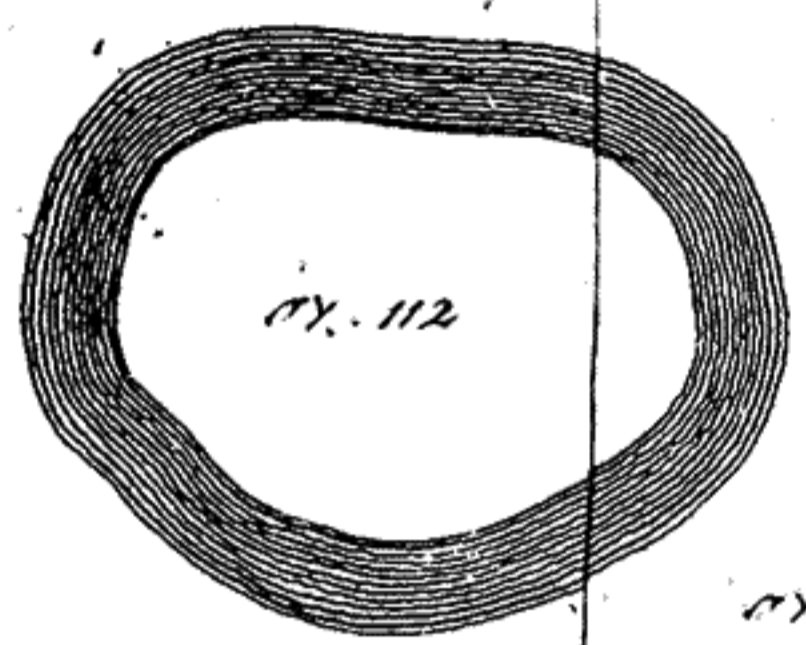
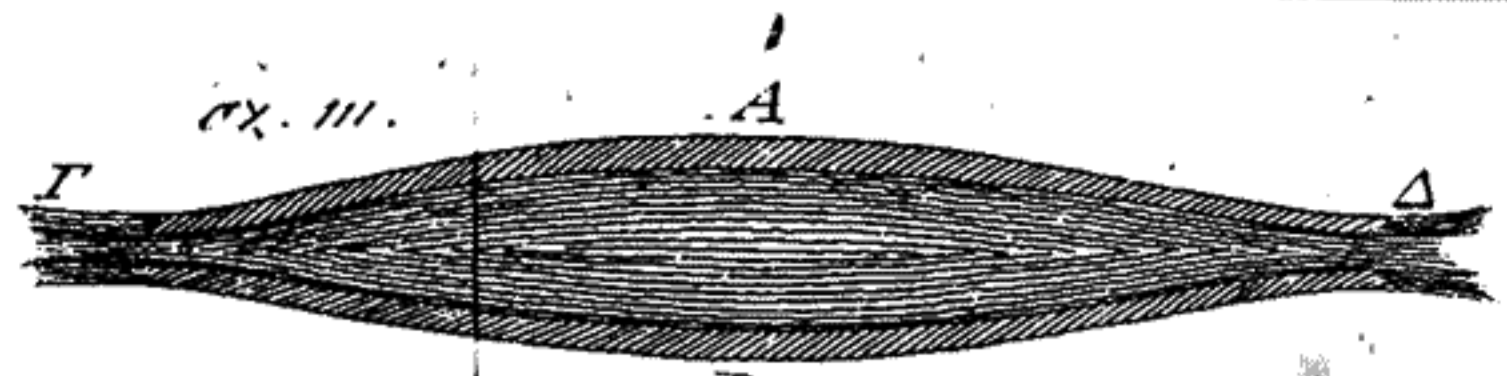
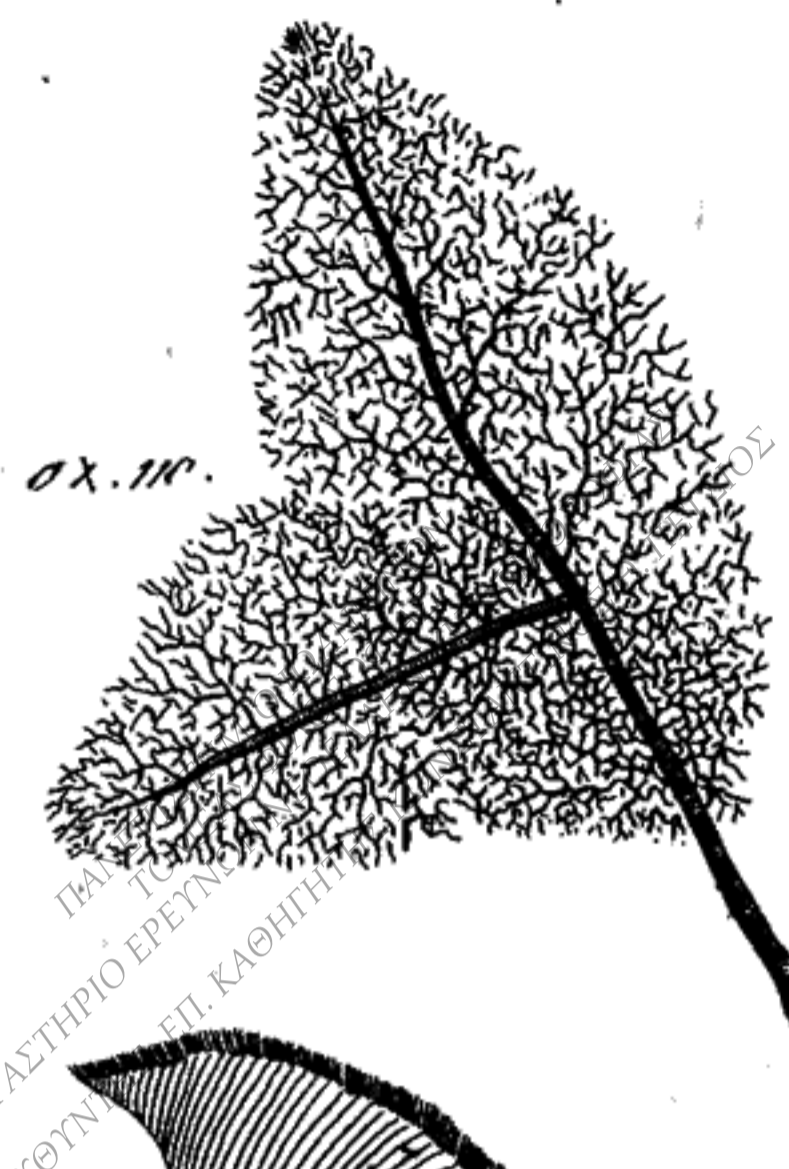
σχ. 109

διαφ. πρὸ τῶν διατῶν
ἀκροσποσίων

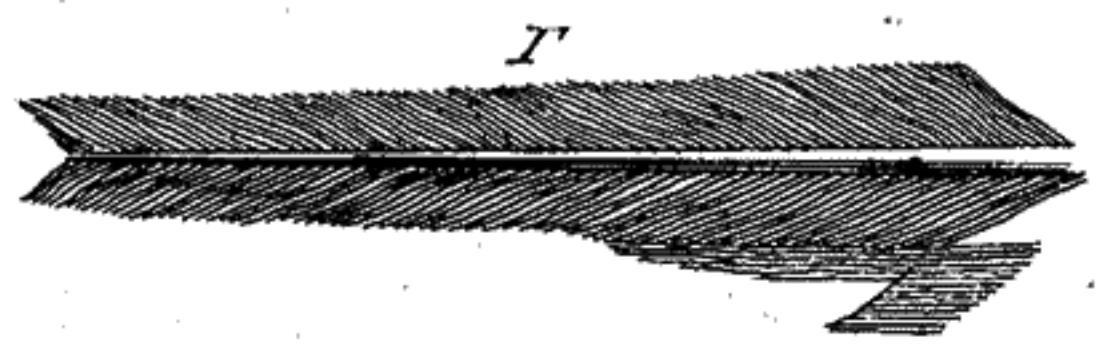
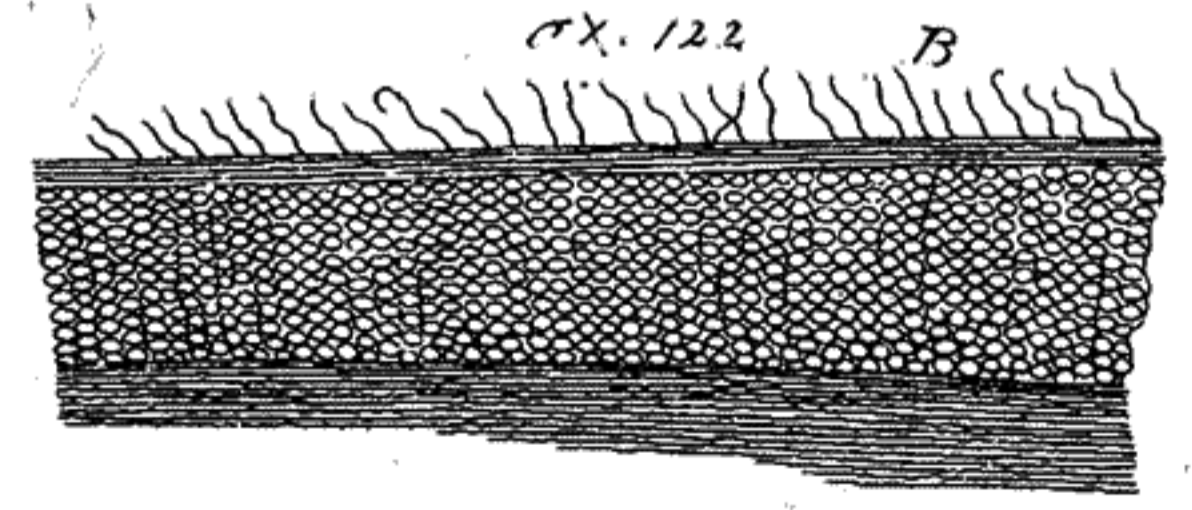
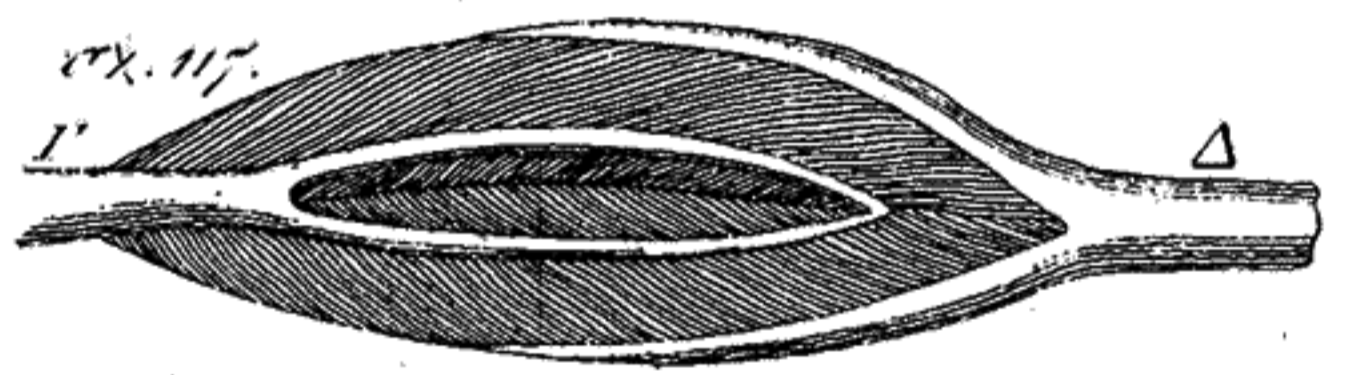


A θ Δ ~~Δ~~ M E H

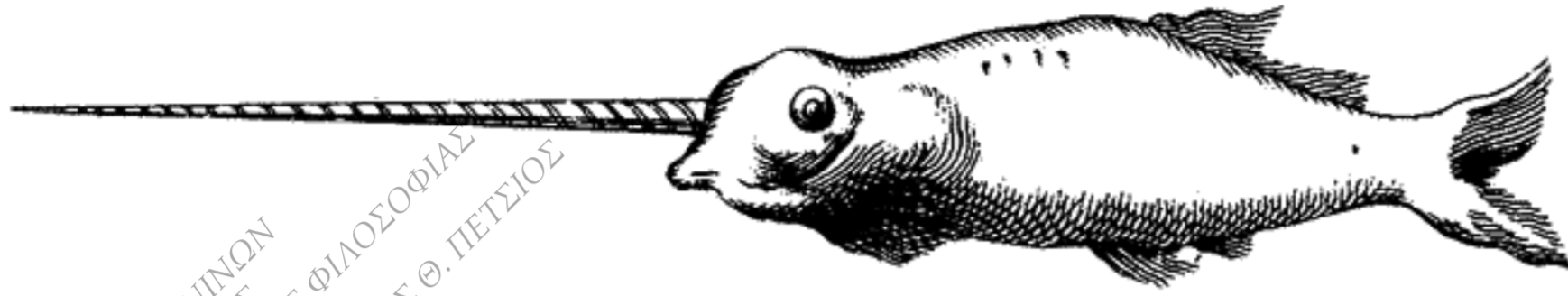
Ε. Γ. Δ της Κ. τ. Π
ANNINA 2006



σχ. 121



σχ. 123



Καμπημελάζης



σχ. 126

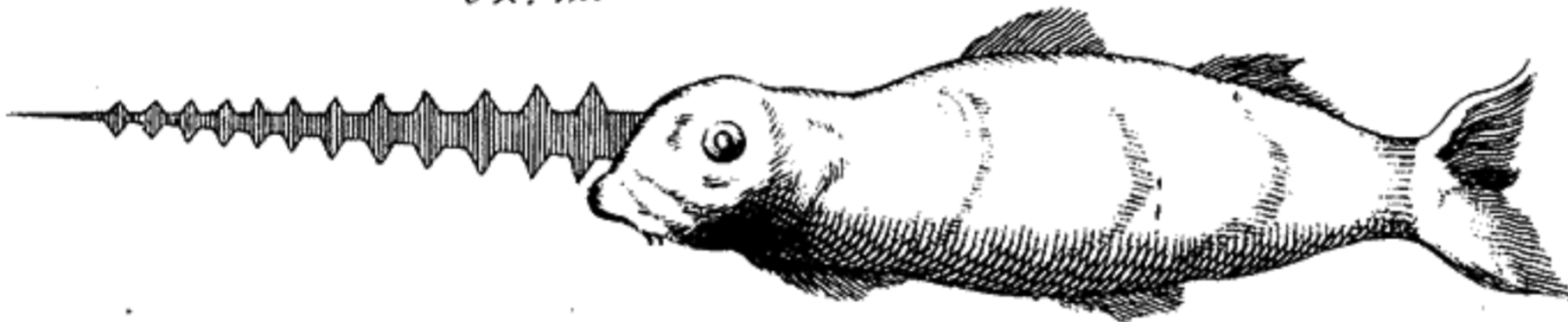
Ιγρσαλίσ



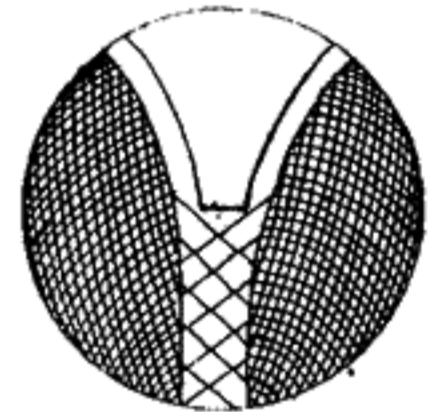
σχ. 124

μελάζης

σχ. 125

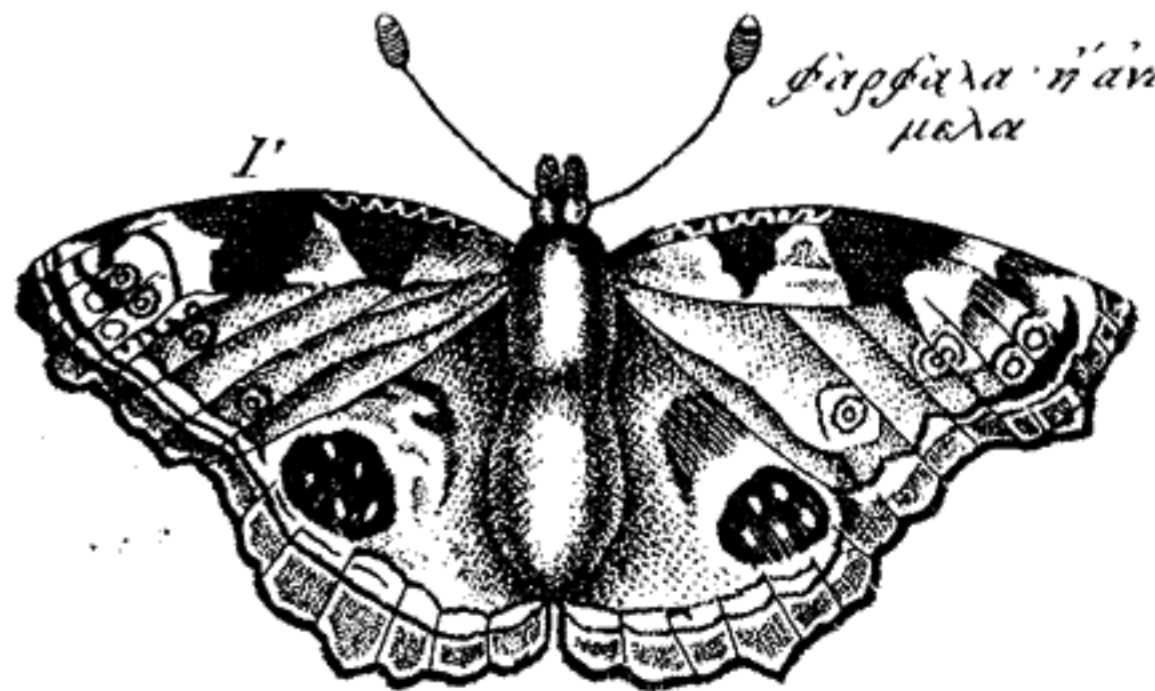


σχ. 127

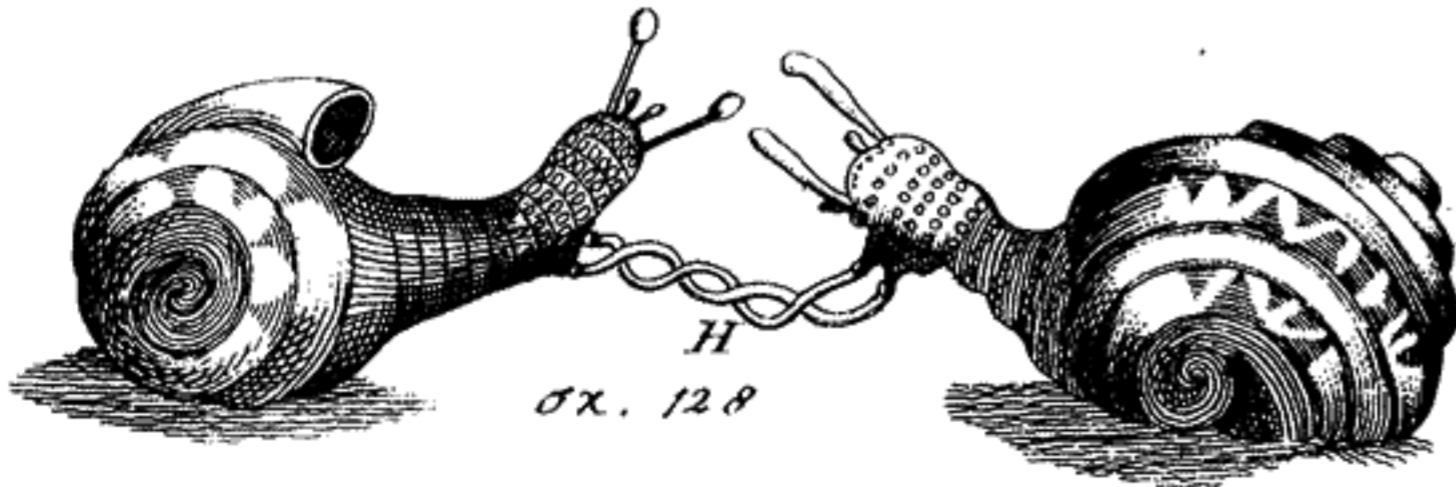


φάρφαλα ή άνι
μελα

I'



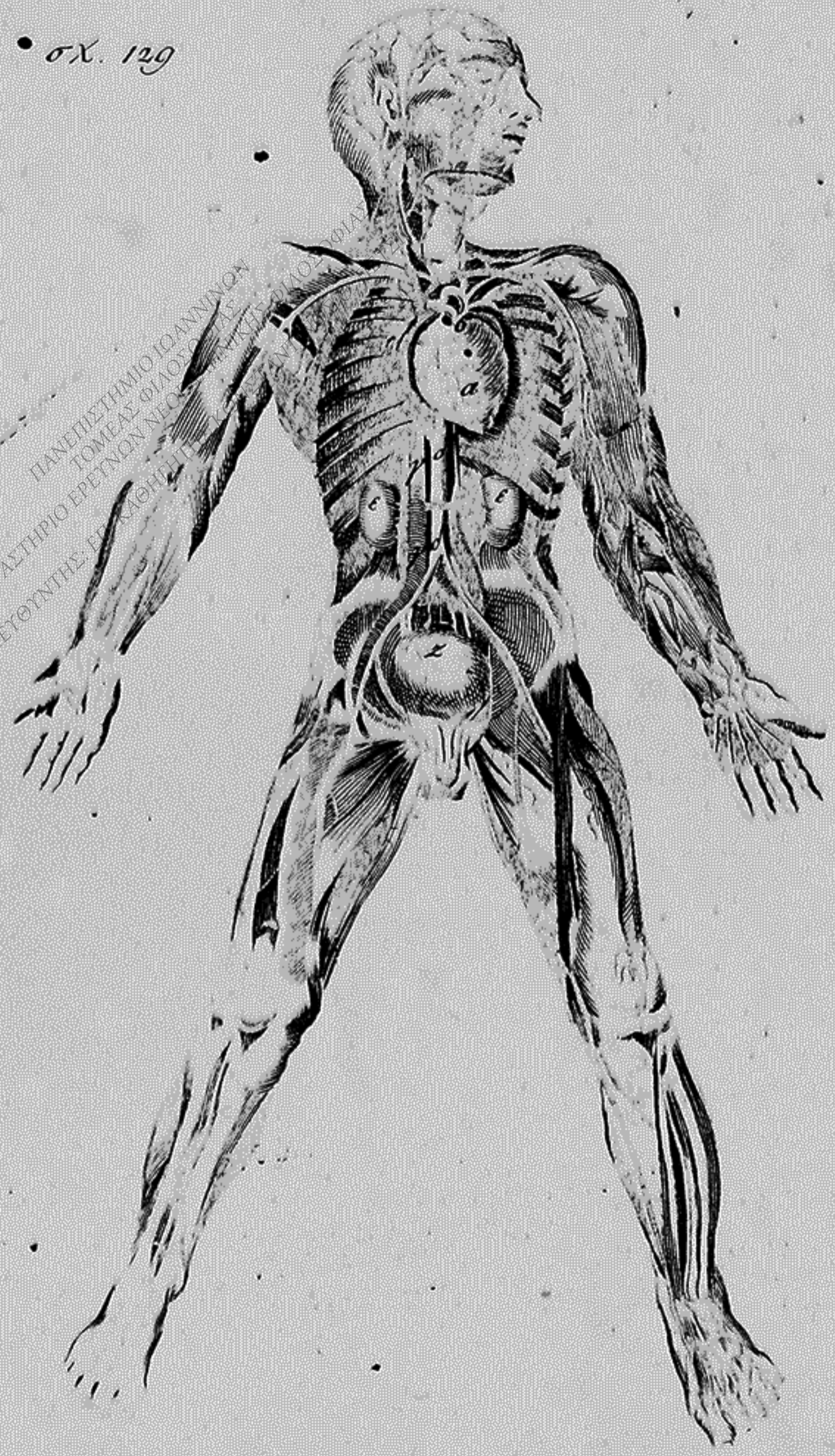
σχ. 128



ΕΡΓΑΣΤΗΡΙΟ ΕΡΕΥΝΩΝ ΝΕΟΕΛΛΗΝΙΚΗΣ ΦΙΛΟΣΟΦΙΑΣ
ΑΝΕΠΙΣΤΗΜΙΟ ΙΩΑΝΝΙΝΩΝ
ΤΟΜΕΑΣ ΦΙΛΟΣΟΦΙΑΣ
ΔΙΕΥΘΥΝΤΗΣ: ΕΠ. ΚΑΘΗΓΗΤΗΣ ΚΩΝΣΤΑΝΤΙΝΟΣ Θ. ΠΕΤΣΙΟΣ

ΕΡΓΑΤΗΣ Κ.Τ.Π.
ΙΩΑΝΝΙΝΑ 2006

σχ. 129



σχ. 130

